

According to OSHA, falls are the leading cause of death among construction workers and nearly one in four fatal falls involve ladders. Amerisure Insurance knows ladder safety is a priority on the jobsite, so we want to highlight the American Ladder Institute's (ALI) free Ladder Safety Training for businesses and their employees.

ALI's Ladder Safety Training covers the proper selection, care and safe use of all ladders, including: step, single and extension, articulated and mobile ladders. Many industries and job roles are also covered, such as construction, manufacturing, warehousing, power, custodial services, chemical and petrochemical, oil and gas, and at home.

WAYS TO USE THE TRAINING

There are several ways businesses can apply the Ladder Safety Training in the workplace:

- ▶ Group Training
- ▶ Onboarding
- ▶ Awareness
- ▶ Safety Meetings

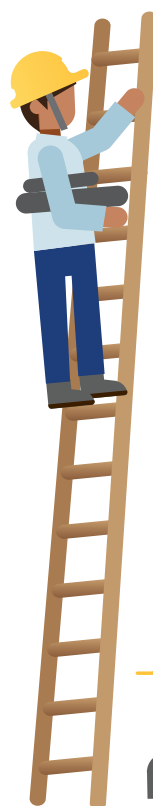
HOW IT WORKS

1. Visit www.laddersafetytraining.org to register. Training managers can register their employees as well.
2. Pick a ladder type from ALI's selection of safety training modules. Participants will take a pretest to see what they know.
3. Start watching media-rich training videos demonstrating safe ladder practices.
4. Take the safety test to earn a certificate of completion. Scores can be shared with training managers and peers.

Contact your agency or local Amerisure Loss Control Consultant for more information about the ALI Ladder Safety Training at [\(800\) 257-1900](tel:8002571900) or losscontrol@amerisure.com.

BY THE NUMBERS

A BUREAU OF LABOR STATISTICS STUDY ON FALLS FROM LADDERS FOUND:



57% HELD OBJECTS WITH ONE OR BOTH HANDS WHILE CLIMBING OR DESCENDING THE LADDER



30% HAD WET, GREASY OR OILY SHOES

66% HAD NEVER BEEN TRAINED IN HOW TO INSPECT LADDERS FOR DEFECTS



73% DIDN'T HAVE OR WEREN'T GIVEN WRITTEN INSTRUCTIONS ON SAFE LADDER USE